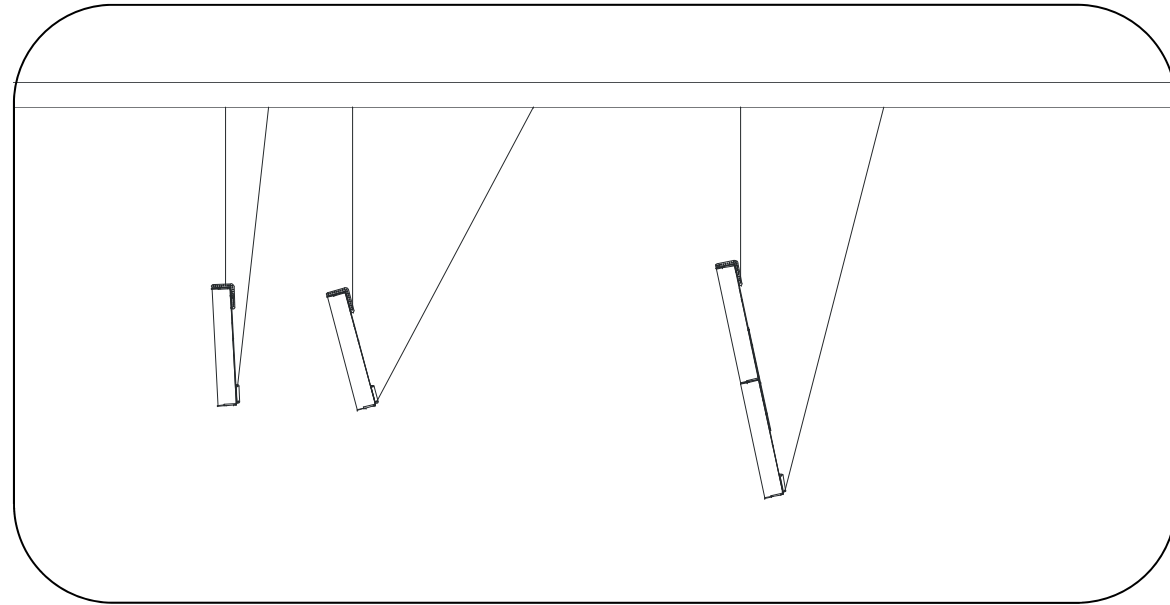



**Figure 3: Fly Kit Suspension (Examples)**



 **Outdoor Installation Tip:** Whenever ENTASYS column loudspeakers are installed outdoors, or exposed to direct rain, water or precipitation, the loudspeaker enclosure must be angled downward at a minimum of two (2) degrees.



**WARNING:** The bolts used and wall/ceiling material into which the Fly Kit assembly is bolted must be capable of supporting the load of the ENTASYS array to be mounted. It is the responsibility of the installer to verify these items.



**CAUTION:** Installation of loudspeakers should only be performed by trained and qualified personnel. It is strongly recommended that a licensed and certified professional structural engineer approve the mounting design.



Community Professional Loudspeakers  
333 East Fifth Street, Chester, PA 19013-4511 USA  
Phone (610) 876-3400 | Fax (610) 874-0190  
www.communitypro.com



# ENT-FK

## ENTASYS Fly Kit

### Fly Kit for Community's ENTASYS Column Line Array System

The ENTASYS Fly Kit, designated ENT-FK, can be used to suspend up to five ENTASYS enclosures in an array. The Fly Kit consists of a Fly Bracket and two Pull Back Brackets, plus all of the hardware required to attach these brackets to the T-Bar Mounting Bracket included with the ENTASYS Column Line Array System.

The Fly Bracket provides multiple attachment points at the top of an array while the Pull Back Brackets provide points lower on the array for additional aiming flexibility. While the attachment points on the Fly Bracket at the top of an array will allow various down-tilt angles with a dead hang, this is not recommended. The attachment points on the Pull Back Bracket at the bottom of an array should also be used. This will provide an extra margin of safety for the installation in the event something goes wrong with the primary suspension to the top attachment point.



**WARNING:** The ENTASYS Fly Kit must not be used to support more than five (5) ENTASYS loudspeakers. Attempting to do so will exceed the Working Load Limit of the bracket and could result in the failure of the bracket kit and potentially result in severe injury and/or loss of life.

All parts in the kit are engineered to provide a high margin of safety when used in accordance with these instructions. The brackets are manufactured of steel and are covered with a durable powder-coat finish. Kits are available in either black or white to match the color of the enclosure.

**Table 1: Fly Kit Part Numbers**

Part No.	Description
ENT-FK	ENTASYS Fly Kit, Black
ENT-FKW	ENTASYS Fly Kit, White

No hardware is provided to attach the ENTASYS column or column assembly and Fly Kit to the mounting surface. Such hardware must be supplied by the installer and should be sized and rated for the weight load of the enclosures. The installer is solely responsible for determining if all rigging components that are used to mount or suspend the enclosure(s) are adequately sized and rated, and if the structure they are mounted or suspended from is capable of safely supporting the aggregate weight load. If multiple enclosures are suspended one above the other, it is the installer's responsibility to insure that the combined weight load does not exceed the Working Load Limit of any one rigging fitting. This is particularly important if the enclosures are steeply angled upward or downward, as most or all of the weight may be supported by the front or rear points only.



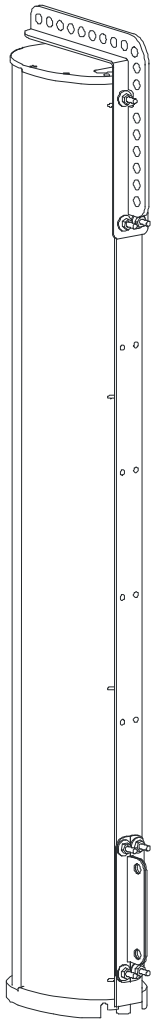
**NOTE:** A single tall array of up to five (5) ENTASYS columns joined together by the ENTASYS Coupler Bracket(s) may be suspended using a single Fly Kit. If multiple columns are to be mounted using a Fly Kit, purchase the appropriate number of ENTASYS Coupler Brackets (part number ENT-CB) and follow the instructions in the complete ENTASYS Installation/Operation Manual included with each ENTASYS column loudspeaker.

For more information on using the ENTASYS Fly Kit, please refer to the complete ENTASYS Installation/Operation Manual enclosed with each ENTASYS column.

**Table 2: Fly Kit Parts List**

Part	Qty
Metal Fly Bracket	1
Metal Pull Back Bracket	2
6 mm Flat Washer	8
6 mm Lock Washer	8
M6 Hex Nut	16
M6 x 25mm Flat Head Screw	4
M6 x 30mm Flat Head Screw	4

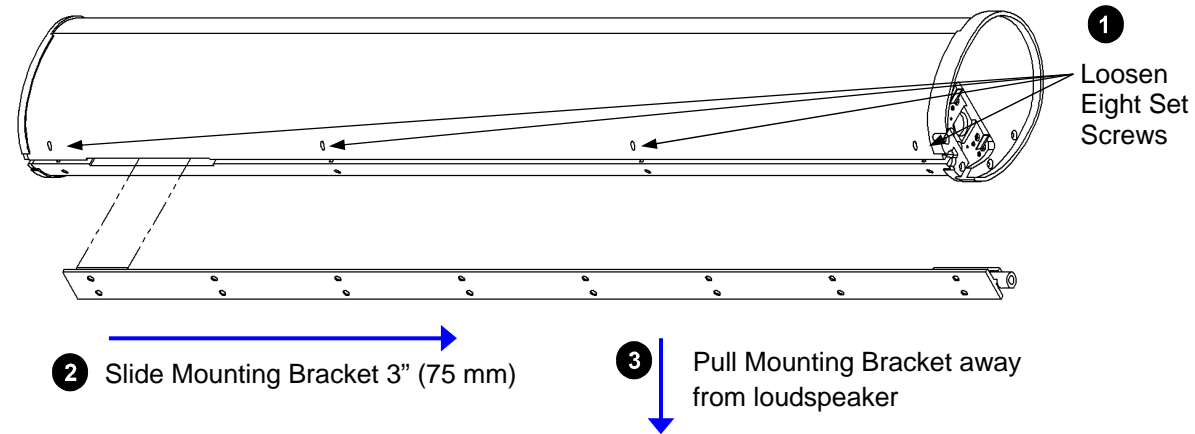
\*\*The installer must supply all other hardware for the installation



## ENTASYS Fly Kit Assembly Instructions

1. The ENTASYS T-Bar Mounting Bracket, sometimes referred to as the "T" Mounting Bracket, is included and shipped attached to each ENTASYS column loudspeaker. Remove the T-Bar Mounting Bracket(s) from each ENTASYS column. This is most easily accomplished by either laying the ENTASYS loudspeaker on its side or placing it upside down on a level surface. There are eight set screws, four on each side of the rear of the enclosure, that secure this bracket to the enclosure. Once these are sufficiently loosened, the Mounting Bracket may be slid down parallel to the enclosure, as if pulling it away from the bottom of the enclosure, approximately 3 inches (75 mm). It can then be pulled out of the slot and away from the enclosure.

**Figure 1: T-Bar Mounting Bracket Removal**



2. If multiple ENTASYS columns are to be suspended in a tall array with the Fly Kit, first connect the individual ENTASYS columns using the appropriate number of ENTASYS Coupler Brackets (part number ENT-CB) and follow the instructions provided in the complete ENTASYS Installation/Operation Manual included with each column. **Make sure the Bottom Fitting is securely fastened to the bottom of the T-Bar Mounting Bracket and Coupler Bracket assembly with its M6 Set Screw. This is critical as the entire weight of the array must be supported by this single Bottom Fitting.** The upper enclosures will not rest on the Bottom Fitting, but instead will rest on the ENTASYS enclosure directly below it.
3. Securely fasten the four M6 x 25mm bolts and nuts to the top four holes in the "T" Mounting Bracket. This will yield four mounting studs for the Fly Bracket. Do not use any washers at this point.
4. Securely fasten the four M6 x 30mm bolts and nuts to the four holes in the "T" Mounting Bracket at the desired location for the Pull Back Brackets. This will yield four mounting studs for the Pull Back Brackets. Do not use any washers at this point. These can be placed in any position along the spine of the array. **If more than one ENTASYS loudspeaker is used in an array the strongest construction results will be obtained when the Pull Back Brackets are attached through a Coupler Bracket.**
5. Slide the "T" Mounting Bracket into the ENTASYS enclosure(s). Securely tighten each of the eight M4 Set Screws in each ENTASYS enclosure to attach the "T" Mounting Bracket to the enclosure(s).
6. Insert the Rubber Plug into the Dual Banana Plug Thru Connector recess.
7. Attach the Fly Bracket to the uppermost studs on the "T" Mounting Bracket using the M6 nuts, lock washers, and flat washers provided. Hand tighten the nuts, then securely tighten the two nuts at the top of the Fly Bracket first. This will compress the Rubber Plug if there is any interference and properly seat the Fly Bracket. Now tighten the two nuts at the bottom of the Fly Bracket.
8. Bolt both Pull Back Brackets to the lowermost studs on the "T" Mounting Bracket using the M6 nuts, lock washers, and flat washers. Securely tighten all four of the nuts.
9. The ENTASYS array should now be ready to be suspended. Use safe rigging practices when attaching all other rigging hardware to the Fly Kit brackets and to the suspension points of the building or other suspension means.

**Figure 2: Fly Kit Assembly Diagram**

